

Gallery
FASHION

INTERNATIONAL TRADE SHOW
FOR FASHION, SHOES & ACCESSORIES

FASHION
&
SHOES

TRADE SHOW MAGAZIN

SPRING/SUMMER 2022

AREAL BÖHLER | DÜSSELDORF

Gallery

FASHION

Nachtrag
Stand 24.07.2021
Addendum
Status 07/24/2021

| | | |
|------------------------|---------------------|--------------------|
| 0049 Agency | Alte Schmiedehallen | A14 |
| Bluestars | Alte Schmiedehallen | C19 |
| Handelsagentur Toraman | Alte Schmiedehallen | A14 |
| Highmalaya | Alte Schmiedehallen | A14 |
| Klitmoller | Alte Schmiedehallen | A13 |
| Luana Moden | Alte Schmiedehallen | G05 |
| Massimo Granieri | Alte Schmiedehallen | Nicht eingetroffen |
| Nais | Halle am Wasserturm | |
| Narli | Alte Schmiedehallen | A14 |
| Nan-Ku | Alte Schmiedehallen | Nicht eingetroffen |
| On Stage | Alte Schmiedehallen | A14 |
| Signore Rossi | Alte Schmiedehallen | A14 |
| TRANSIT | Alte Schmiedehallen | F01 |
| Volfagli Firenze | Halle am Wasserturm | |

Teilnehmer A-Z Participants

| | | | | | |
|---|-------|--------------------------|-------|-------------------------|-------|
| 02.02. KNITWEAR | F18 | AGENZIA DANIELE D'AIELLO | A04 | B BACI | A22 |
| 12 SEASONS | B04 | AHMADDY | D03 | BAGNOLI SARTORIA NAPOLI | |
| 2 STAR | | AIM HANDMADE IN ITALY | ◆ A22 | BALI-BALI | E30 |
| 365 DRY | A07 | AINO | F02 | BALM | ◆ A22 |
| 365 ITALY | C19 | ALEXANDER VASILYER | F18 | BANGLE UP | ◆ A22 |
| 4CCCCCES SHOES | ◆ C13 | ALFA ROMEO | A22 | BARBARDA DI DAVIDE | ◆ A22 |
| A A.B.C.L JAPAN GARMENTS | B17 | ALMA & LOVIS | ◆ B22 | BARRACUDA | ◆ A22 |
| ABSOLUT | F14 | ALTO MILANO | ◆ C19 | BATUCADA FASHION | ◆ A22 |
| ACCONDA FASHION | F15 | ALYSI | ◆ A22 | BCC:ED | |
| AEL | B01 | AMICI BY BACI | F19 | BE EDGY | B04 |
| AEQUAMENTE | B02 | ANGELA NTERNATIONAL | D07 | BENEVIERRE | ◆ A22 |
| AERONAUTICA MILITARE | ◆ A22 | ANOTHER BRAND | ◆ B15 | BERGAMASCO PELLE | ◆ A22 |
| AGENTUR DAVID MENDOZA | A07 | ARLT | ◆ D29 | BERNA | A22 |
| AGENTUR MARCUS SCHIESS | A01 | AUSTRIANDESIGN.AT | B08 | BERNARD ZINS | ◆ A22 |
| AGENTUR STEFAN KUDLA – THE LAST OF THE TRUE | B17 | AVIREX KIDS | ◆ A22 | BERNESE MILANO | ◆ A22 |
| | | AVIT MODE | C09 | BLACKSPIDER | G21 |
| | | | | BLOOMING 24 | |

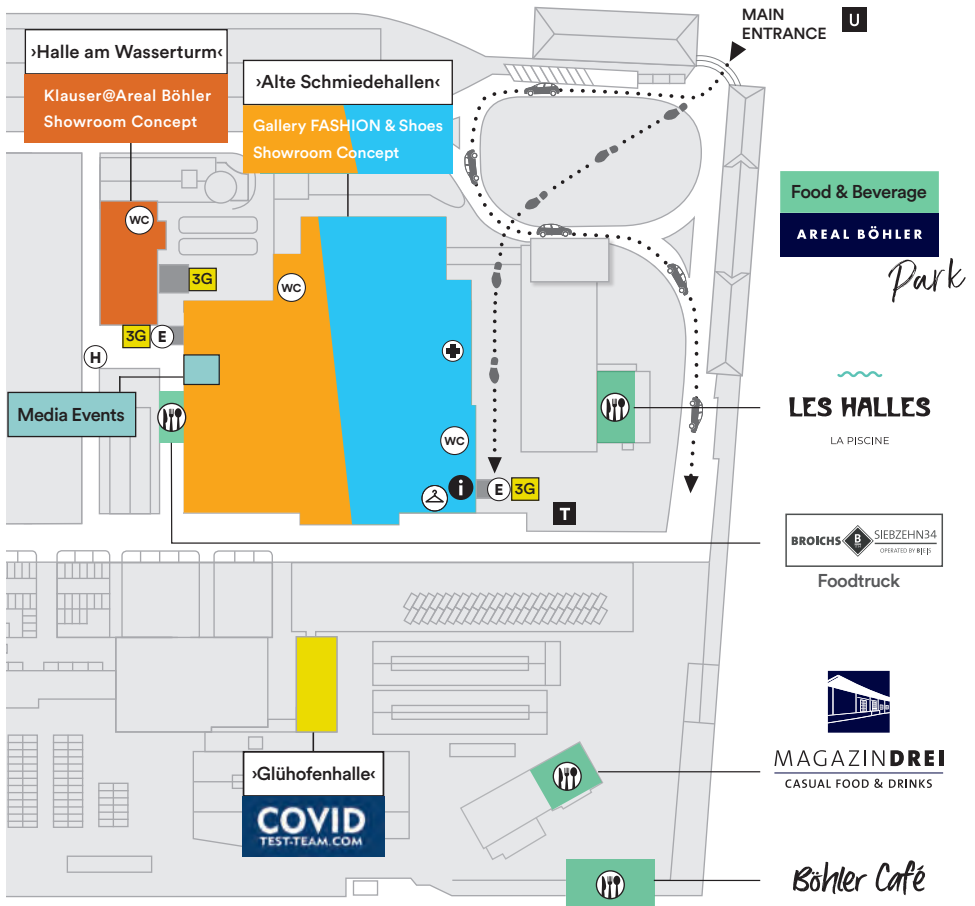


- Alte Schmiedehallen Showroom Concept July 22-26, 2021
- Halle am Wasserturm . . . Showroom Concept July 22-26, 2021
- Alte Schmiedehallen Gallery FASHION & Shoes. July 24-26, 2021

| | | | | | | |
|----------|------------------------|-------|------------------------|-------|---------------------------|-------|
| | BLUE DE GÈNES | B17 | DELUXE DISTRIBUTION | ◆ C13 | GUDRUN GRENZ GERMANY | F04 |
| | BLUI | C19 | DEUTSCHER FACHVERLAG | F23 | GYRO ITALIA | F19 |
| | BLUNDSTONE | D25 | DRAGON DIFFUSION | | H H+ CUBE | B02 |
| | BOEMOS | ◆ A22 | DRM | ◆ C13 | HANNOH+ | B02 |
| | BOMBERS ORIGINAL | | EASY LOCK | B02 | HEAVEN DOOR | ◆ A22 |
| | BRADDOCK | ◆ A22 | E EAU DE MILANO | ◆ A22 | HERRMANN | E03 |
| | BRIGLIA 1949 | | ECOALF | ◆ C13 | HEVELOPE | A22 |
| | BUGATTI | ◆ A22 | EKN FOOTWEAR | ◆ C13 | HI MALAYA | C09 |
| | BURNI | ◆ D29 | ELEMENTE CLEMENTE | A03 | HIRSCH NATUR | ◆ B22 |
| | BUTAPANA | G11 | ELLEN PAULSSEN HÜTE | ◆ D15 | HIRSCH SPORTS | ◆ B22 |
| | BY DORA GUIMARAES | A22 | ELLI | F15 | HOFF SHOES | ◆ C13 |
| | BYLUMA | ◆ A22 | EMMA B. | ◆ D29 | HS FOOTWEAR | D17 |
| C | CALPIERRE | A17 | ESCAPULARIO | B13 | HUGENBERG | C03 |
| | CAMICISSIMA | ◆ A22 | ESMERALDA BERLIN | F03 | I IKO – IRENA KOCH | G15 |
| | CASALL | ◆ C13 | ESSENTIAL CLOTHING | A03 | IN BED WITH YOU | |
| | CASHMERE BLUES | C09 | EXITALIA | ◆ D19 | IN THE BOX | |
| | CATHERINE ANDRÉ | ◆ G11 | F FABI SHOES | ◆ A22 | INDIGO GALLERY GERMANY | C07 |
| | CHALONA | F14 | FEELINGS | F18 | INES DE LA FRESSANGE | ◆ A22 |
| | CHAOS HATS | ◆ A22 | FELICIA MAGNO | | IPANTS | F18 |
| | CHRISTIAN GHIEMMETTI | ◆ A22 | FILIPPO DE LAURENTIIS | | IRIS SETLAKWE | ◆ A22 |
| | CHRISTINE BI | ◆ A22 | FRANCESCA BELLAVITA | ◆ A22 | IURI | ◆ A22 |
| | CIMA SANDALS | ◆ A22 | FRANCK BOCLET | ◆ A22 | J JAGVI | ◆ A22 |
| | CINGOMMA | ◆ A22 | FRANCO FERRARI | | JANET & JANET | ◆ A22 |
| | CINTURA M | E01 | G G.R.P. | B17 | JAVIER MORATO | ◆ A22 |
| | COLLECTION PRIVÉ | ◆ A22 | GABBA | A02 | JI WON CHOI | ◆ A22 |
| | COLORS OF CALIFORNIA | A22 | GABEL | ◆ A22 | JNY | E30 |
| | COSTELLAZIONI GIOIELLI | ◆ A22 | GARDINI SPIRIT | ◆ A22 | JOANA DANCIU | B05 |
| | CREATIVE TIME | B07 | GIANGI NAPOLI | | JOHNNYLOVE | A13 |
| | CRISTINA BARROS | ◆ G21 | GIX | E03 | K KAMAWATCH | ◆ A22 |
| D | DARKGEM | A05 | GRAND STEP SHOES | ◆ B22 | KARMIINI | F02 |
| | | | GREEN DRESS | ◆ A22 | KIMONORAIN | A07 |

Welcome to Gallery FASHION & Shoes

@AREAL BÖHLER



- 3G** Checkpoint
- E** Entrance
- i** Information
- H** Gallery EXPRESS
- U** Tube Station Lörick, U70, U74, U76
- T** Taxi
- Driveway to parking
- Walkway to entrance
- +** First Aid
- A** Wardrobe

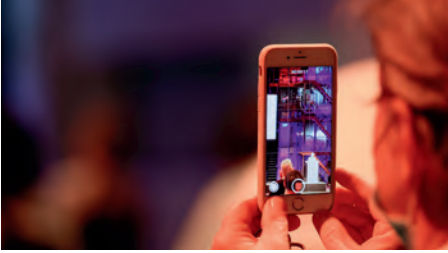
ADDRESS

Areal Böhler, Hansaallee 321
40549 Düsseldorf, Germany



MEDIA EVENTS

›Alte Schmiedehallen‹



Samstag, 24. Juli

10:30 – 12:00 Uhr

DMI BUYER'S BRIEFING FASHION & SHOES

Alles, was Sie über die Saison
Frühjahr/Sommer 2022 wissen sollten.

12:00 – 13:30 Uhr

FUTURE FASHION FORECAST

Die Analysten des DMI geben einen
Ausblick auf die Welt von übermorgen.

14:00 + 16:00 Uhr (Stand E25)

BOTANICAL DYE SESSIONS

by dainty dystopia

Sonntag, 25. Juli

10:30 – 12:00 Uhr

FUTURE FEMALE FASHION FORUM

Podiumsdiskussion mit prominenter
Besetzung von Entscheiderinnen und
Gestalterinnen aus verschiedenen Branchen.

12:30 – 13:30 Uhr

DMI BUYER'S BRIEFING FASHION & SHOES

15:00 UHR

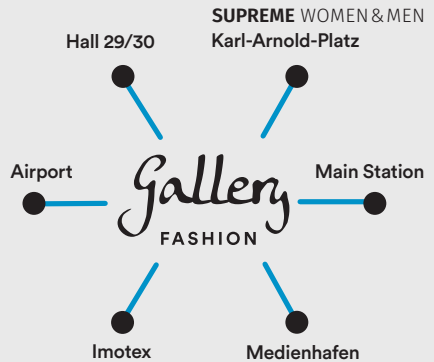
**GALLERY TALK: MIT MARKTPLATZ-
TECHNOLOGIE IN DIE ZUKUNFT**

14:00 + 16:00 Uhr (Stand E25)

BOTANICAL DYE SESSIONS



GALLERY EXPRESS



All routes on demand

Fri 23 July 10.00 am – 6.00 pm

Sat 24 July 10.00 am – 6.00 pm

Sun 25 July 10.00 am – 6.00 pm

Mon 26 July 10.00 am – 6.00 pm

TAXI

+49 211 33333 / +49 211 212121

TRAM

Stop: Lörick U70, U74, U76

OPENING TIMES

Sat 24 July 9.30 am – 6.00 pm

Sun 25 July 9.30 am – 6.00 pm

Mon 26 July 9.30 am – 5.00 pm

Teilnehmer A–Z Participants

| | | | | | | | |
|---------------------------------------|--------------------|--------------------|--------------|------------------------------------|----------------------|---------|-----|
| KING TARTUFOLI | A07 | MASSIMO GRANIERI | ◆ D19 | ORGANIC BASICS | ◆ C13 | | |
| KLAUSER | | MAT FASHION | E02 | OUTFITS24 | ◆ G28 | | |
| KONTATTO | | MAURIZIO MIRI | | P | PAEZ | ◆ A22 | |
| KROLL | ◆ A17 | MCBURN | ◆ D29 | PAL OFFNER | E13 | | |
| L | L.A. WATER | ◆ A22 | MCBURN WHITE | ◆ D29 | PANTOFOLA D'ORO 1886 | | |
| LA HAINE INSIDE US | A04 | MD SHOES AND MORE | E30 | PAOLO PECORA | ◆ A22 | | |
| LAMBORGHINI | ◆ A22 | MEXICANA | A07 | PAPUCEI | D07 | | |
| LAULHERE PARIS | ◆ A22 | MGM DESIGN | E01 | PARCO DENIM | ◆ A22 | | |
| L'AUTRE CHOSE | ◆ A22 | MIAKYU | ◆ A22 | PAULINA BLACHURA | F08 | | |
| LAVI COUTURE | ◆ A22 | MIMICRI | ◆ E07 | PETRO SOROKA | F18 | | |
| LE BOTTEGHE D'ARTE | ◆ A22 | MJ WATSON | B02 | PEUTEREY | ◆ A22 | | |
| LE TEMPS DES CERISES | C07 | MNDZ | A07 | PHNOVE | F18 | | |
| LEMON JELLY | D21 | MOBEADS | B13 | PHOBIA | ◆ A22 | | |
| LES TRICOTS DE LÉA | | MOMO DESIGN | A22 | PICCOLA LUDO | ◆ A22 | | |
| LISANZA | ◆ A22 | MONOS MODA | ◆ A22 | PIERRE LOUIS MASCIA | | | |
| LOFINA | D09 | MOVITRA MILANO | ◆ A22 | PIUMA CARE | ◆ A22 | | |
| LUIS TRENKER | A18 | MUSI BY MUSYCHENKO | F18 | PROMISE | ◆ A22 | | |
| LUNA BRANDS | ◆ A22 | MY SOUL | F17 | PT FURS | ◆ A22 | | |
| LUNARIA CASHMERE | | N | NAGUISA | ◆ A22 | R | RALSTON | F02 |
| LUNGOMARE STUDIO | ◆ A22 | NANAN KIDS | ◆ A22 | REFRIJIWEAR | C13 | | |
| LUUKAA | F11 | NEVER ENOUGH | B07 | REGENESI | ◆ A22 | | |
| M | MAJESTIC FILATURES | NIJII PARIS | ◆ B01 | ROSH STUDIOS – ROSHAN PAUL | D21 | | |
| MALO | | NINAEI | ◆ A22 | ROYAL CHANGRA | C09 | | |
| MANILA GRACE | ◆ A22 | NOA HARMON | ◆ A22 | RUN OF | ◆ C13 | | |
| MANILA GRACE KIDS | ◆ A22 | NOBODY'S PROPERTY | F18 | S | S°N | E21 | |
| MANUEL RITZ | ◆ A22 | NUBIKK | D21 | SALTO | D05 | | |
| MAPACHE | A07 | O | OF HANDMADE | ◆ A22 | SALVATORE PICCOLO | | |
| MARIA BELLENTANI | ◆ A22 | OLGA SHYRAI | F18 | SASHKAPROJECT | F18 | | |
| MARINA C | ◆ A22 | ONE-OFFSUE | F16 | SATELLITE | ◆ A22 | | |
| MARIO VALENTINO | A22 | OOON CASHMERE | ◆ | SCALERION | D25 | | |
| MARTINA DENKSTEIN – HANDELSAGENTUR | D07 | OPEN SPACE | | SCHAURAUUM FÜR ANGEWANDTE KUNST | B08 | | |
| MASERATI | ◆ A22 | OPPIDUM FRANCE | ◆ A22 | | | | |

- Alte Schmiedehallen Showroom Concept July 22-26, 2021
- Halle am Wasserturm Showroom Concept July 22-26, 2021
- Alte Schmiedehallen Gallery FASHION & Shoes. July 24-26, 2021

| | | | | | |
|-------------------------------|-------|--------------------|-------|------------------------------|-------|
| SCOTCH & SODA FOOTWEAR | D17 | SUPREME GRIP | ◆ A22 | VISION OF SUPER | ◆ A22 |
| SELDOM STRICKMANUFAKTUR | B03 | T-LOVE | ◆ A22 | VIVEUR | ◆ A22 |
| SERIEN°UMERICA | ◆ E21 | TAITÙ MILANO | ◆ A22 | WE DISTRIBUTION HAMBURG | A13 |
| SHANGRI – LA HERITAGE | B17 | TANDEM | ◆ F01 | WOLKENWERK | E30 |
| SHOTO | B18 | TEDORA | ◆ A22 | WOLVERINE | B17 |
| SIMONE BRUNS | ◆ C25 | TEEZY | | WOMSH | C19 |
| SOMMA 1867 | ◆ A22 | TEXTILWIRTSCHAFT | F23 | WOMSH SUSTAINABLE ATHLEISURE | C19 |
| SORBET ISLAND | D13 | THANH MINH | B08 | XD FASHION GROUP | E15 |
| SPECIAL DAY | ◆ A22 | THANK MODEDESIGN | B08 | XD XENIA DESIGN | E15 |
| STEFANO MEDORI | B18 | THE NOON | A02 | Z ZANCAN | ◆ A22 |
| STEPS OF SPIRIT | ◆ B22 | THE PLATFORM GROUP | ◆ G28 | ZEITLOS BY LUANA | G05 |
| STRATEGIA E IMPRESA | A22 | TREBARRABI | ◆ A22 | ZEN ETHIC | ◆ F06 |
| STRATEGY & DISTRIBUTION | A22 | TRES CODE | F18 | | |
| STUDIO B3 | F08 | TRIPPEN | A08 | | |
| STUDIOVENTITRE – ROBERT SAKIC | C19 | UNIFORM JEANS | ◆ C13 | | |
| SUEI | ◆ A22 | UNITED NUDE | ◆ C13 | | |
| | | V VARENNA | ◆ A22 | | |
| | | VERBIER 36 | ◆ A22 | | |

Submission deadline:
July 12, 2021

◆ New brand

KLAUSER@AREAL BÖHLER

Halle am Wasserturm

2 STAR
BAGNOLI SARTORIA NAPOLI
BCC:ED
BLOOMING 24
BOMBERS ORIGINAL
BRIGLIA 1949
DRAGON DIFFUSION
FELICIA MAGNO
FILIPPO DE LAURENTIIS
FRANCO FERRARI

GIANGI NAPOLI
IN BED WITH YOU
IN THE BOX
KLAUSER
KONTATTO
LES TRICOTS DE LÉA
LUNARIA CASHMERE
MAJESTIC FILATURES
MALO
MAURIZIO MIRI

OOON CASHMERE ◆
OPEN SPACE
PANTOFOLA D'ORO 1886
PIERRE LOUIS MASCIA
SALVATORE PICCOLO
TEEZY

Submission deadline:
July 12, 2021

◆ New brand

Herzlich Willkommen im neuen Gastronomie-Viertel

AREAL BÖHLER

Welcome to our new catering quarter

Park



FOODTRUCK

Open during the entire term.

Warme & kalte Getränke, verschiedene Snacks, Anti Pasti, variierende warme Gerichte.

Warm & cold drinks, various snacks, anti pasti, various warm dishes.

LES HALLES

Monday – Friday: 9.00 am – 1.00 pm
Saturday + Sunday: 10.00 am – 1.00 pm

Moderne Crossover-Küche mit regionalen und saisonalen Produkten, Mittags- und Abendkarte.

Modern crossover cuisine with regional and seasonal products, lunch and dinner menu.



Böhler Café

Tuesday – Friday: 9.00 am – 5.00 pm
Saturday + Sunday: noon – 5.00 pm

Kaffeespezialitäten, Kuchen und Waffeln, herzhafte Snacks – alles frisch und hausgemacht.

Coffee specialties, cakes and waffles, savoury snacks – all fresh and homemade.



MAGAZIN DREI

Tuesday – Friday: 4.00 pm – 10.00 pm
Saturday: 1.00 pm – 10.00 pm
Sunday: 1.00 pm – 6.00 pm

Warme & kalte Getränke, Yomaro Frozen Yogurt, Flammkuchen, Antipasti Platten.

Hot & cold drinks, Yomaro frozen yogurt, tarte flambée, antipasti platters.



Gallery
SHOES

INTERNATIONAL TRADE SHOW
FOR SHOES, FASHION & ACCESSORIES

SHOES
&
FASHION

August 29 – 31, 2021

AREAL BÖHLER
GALLERY-SHOES.COM

Gallery
FASHION

INTERNATIONAL TRADE SHOW
FOR FASHION, SHOES & ACCESSORIES

FASHION
&
SHOES

January 29 – 31, 2022
Showroom Concept
January 27 – 31, 2022

AREAL BÖHLER
GALLERY-DUESSELDORF.COM